

# LOGBOOK



# TABLE OF CONTENTS

ABOUT US

SERVICES

BASE MATERIAL

CEILING

LIGHTING

DIVISION

WALL

CHATPOD

PROJECTS

DATA SHEETS



# RAW MATERIAL

ARCHISONIC® reduces reverberated noise in shared environments, making it ideal for use in a variety of commercial interior spaces, including workplace, education and hospitality environments. It is a streamlined product with a fabric-like finish, designed with de-materialisation in mind. Once it's been installed, there is no need to upholster, paint or protect it.

## PRODUCT RANGE

ARCHISONIC® offers the largest colour palette in the market. The solid colour remains consistent throughout the thickness of the panel, so you can cut, create and install without the need for edging or capping.

## APPLICATIONS

ARCHISONIC® is durable light weight and easy to cut and install, making it ideal for a multitude of interior applications.

## ACOUSTIC CONTROL

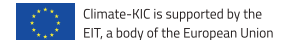
ARCHISONIC® is optimised for acoustic performance and has been independently tested in accordance with EN ISO 11654 standards to meet outstanding acoustic absorption.

## DESIGNED FOR COMMERCIAL INTERIORS

ARCHISONIC® has undergone many forms of industry testing and complies with some of the worlds' highest mandatory standards. Its colour fastness is unbeatable, it is free of formaldehyde, has an extremely low level of VOC which improves the room environment and has a fire classification of B-s1, d0.

## PRODUCTION

ARCHISONIC® is manufactured using 88 post-consumer plastic bottles\* for every square meter of finished material. The shredded bottles are then melted into a viscous molasses and the color is added to grant no wastage of color during the process. The molasses is then released through a spinneret and cooled. Recycled fibers are brittle and the felting process is very delicate. Unlike virgin fiber manufacturers, ARCHISONIC is manufactured in the same traditional way as natural wool felt. In order to achieve the stiffness of the product after felting, the material is baked at 238°C to cross-link the fibers naturally without any glue or any other additives.



# QUIET NEUTRALS

SNOW WHITE

500

CLOUD

103

SMOKE GREY

442

CHARCOAL

542

WARM STONE

105

MILK

404





# WARM NATURALS

WARM STONE

105

MILK

404

SHELL PINK

102

SOFT CORAL

516

TERRACOTTA

239

GARNET

724



# LIVING GREENS

SPEARMINT

706

SUCCULENT

712

MOSS

439

NORDIC PINE

311



# ELEMENTAL BLUES

ICE BLUE

304

WINTER SKY

410

MARINE BLUE

864

PACIFIC OCEAN

432

MIDNIGHT

810





# SOOTHING PASTELS

SHELL PINK

102

SOFT CORAL

516

ICE BLUE

304

WINTER SKY

410

SPEARMINT

706

SUCCULENT

712



# ELEGANT DARKS

GARNET

724

MARINE BLUE

864

MIDNIGHT

810

NORDIC PINE

311

RAVEN

550



# ENERGETIC BRIGHTS

PACIFIC OCEAN

432

MOSS

439

SUNSHINE

846

ELECTRIC ORANGE

464

HOT PINK

140

GARPE

540



# PRIMARY PLAY

SNOW WHITE

500

CHARCOAL

542

MARINE BLUE

864

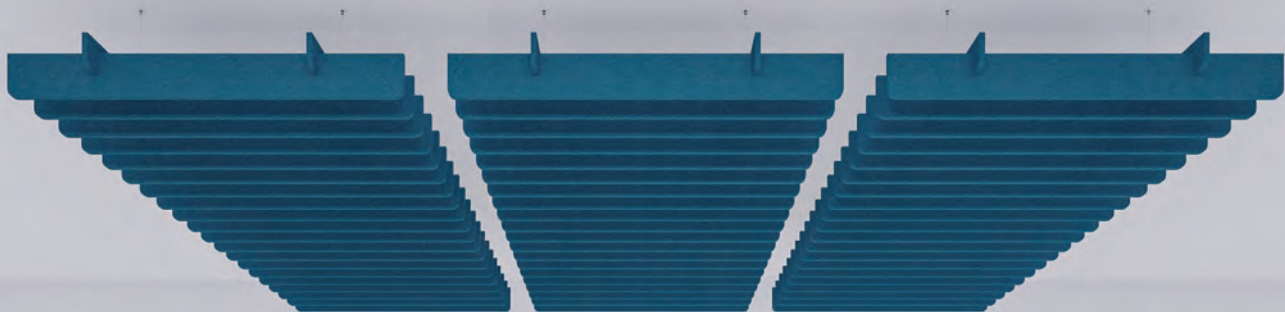
POSTER RED

662

SUNSHINE

846

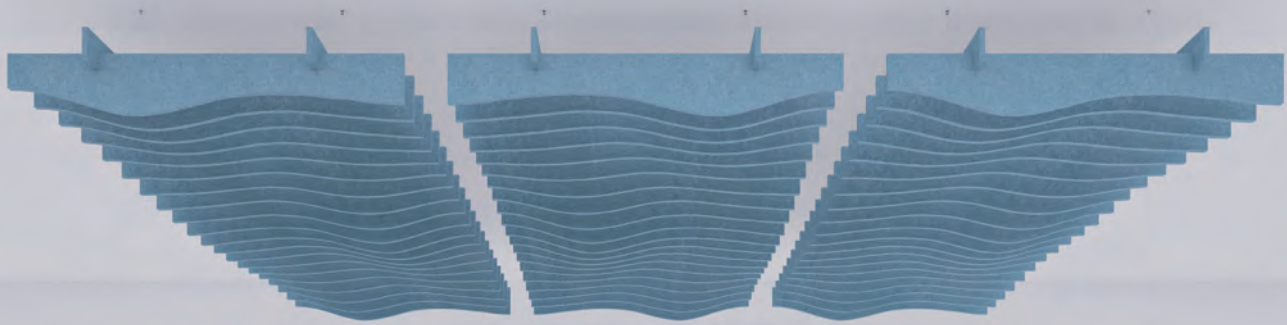




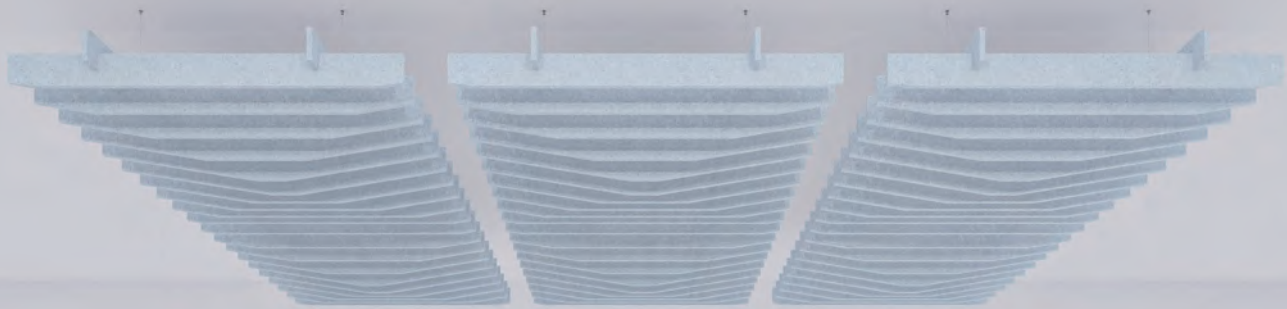
**STRAIGHT**  
CEILING



**EDGE**  
CEILING



**WAVE**  
CEILING



**PEAK**  
CEILING





**NEBULA**  
CEILING



**WAVE MORPH - BESPOKE**  
CEILING



**RECTANGLE, SQUARE**  
CEILING



**CIRCLE**  
CEILING





**STONE**  
CEILING



**FOREST**  
CEILING



**FOCUS**  
LIGHTING



**UMBRA**  
LIGHTING



**UMBRA**  
LIGHTING





**AGNES**  
LIGHTING



**DECIPIO**  
LIGHTING



**TABULA**  
WALL



**FISHBONE**  
WALL



**HEXAGON**  
WALL

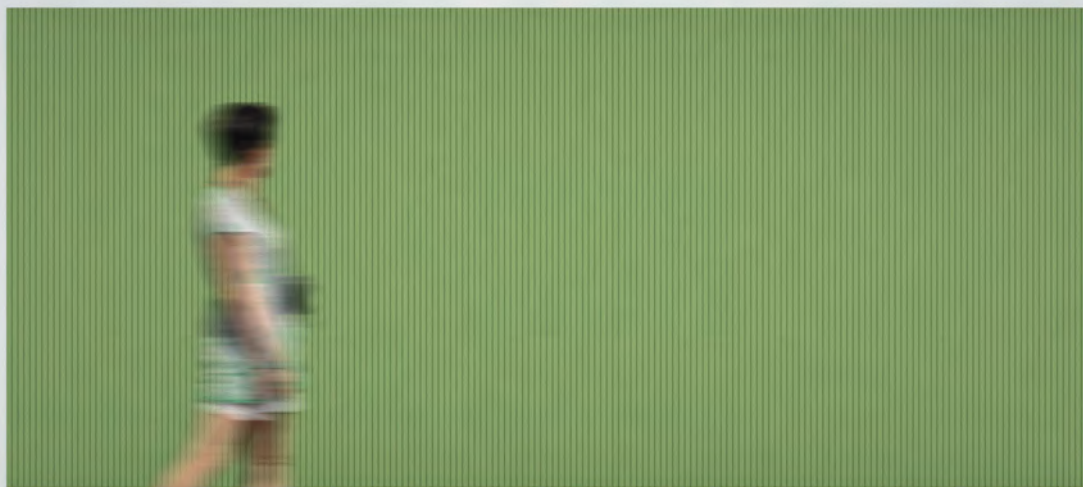




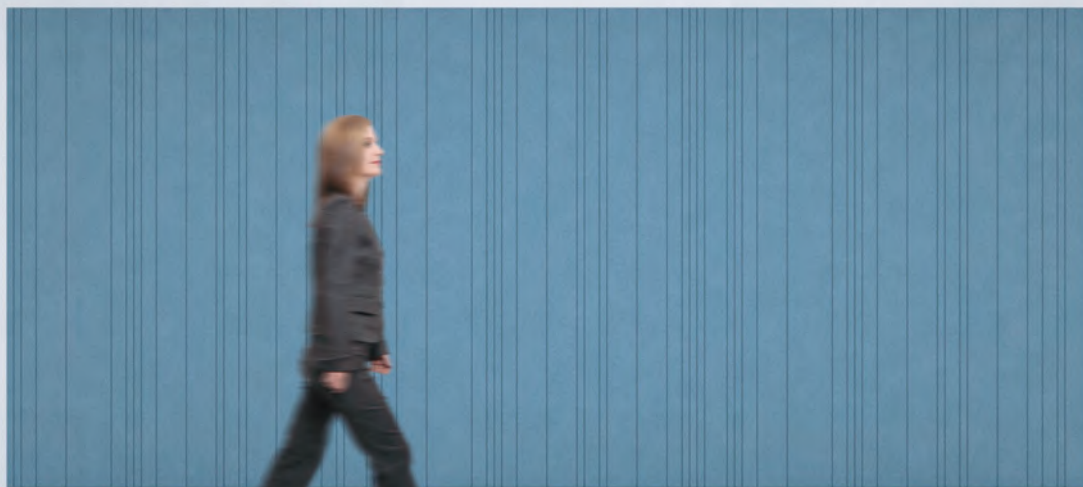
**FLOW**  
WALL



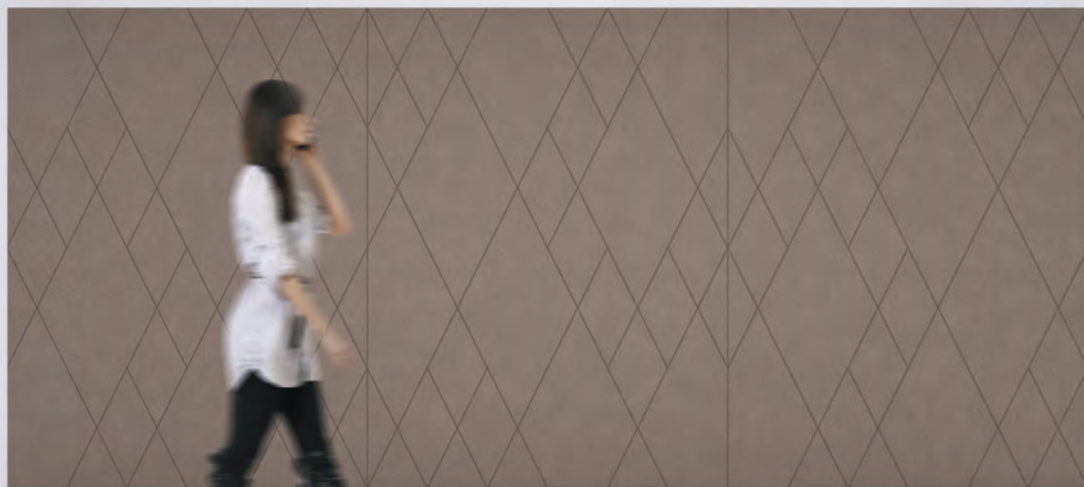
**KINGS CROSS**  
WALL



**VERTIGO**  
WALL

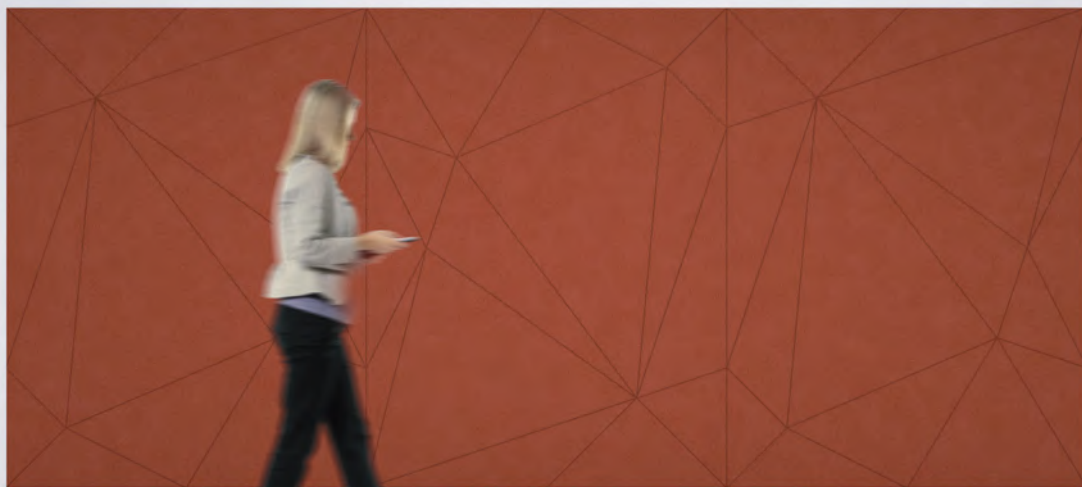


**VERTIGO IRREGULAR**  
WALL

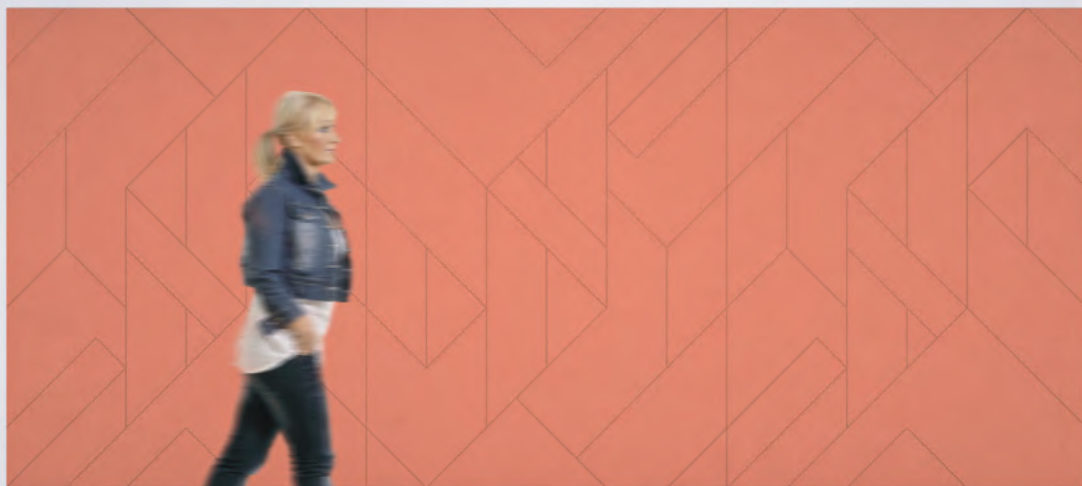


**PRISMA**  
WALL

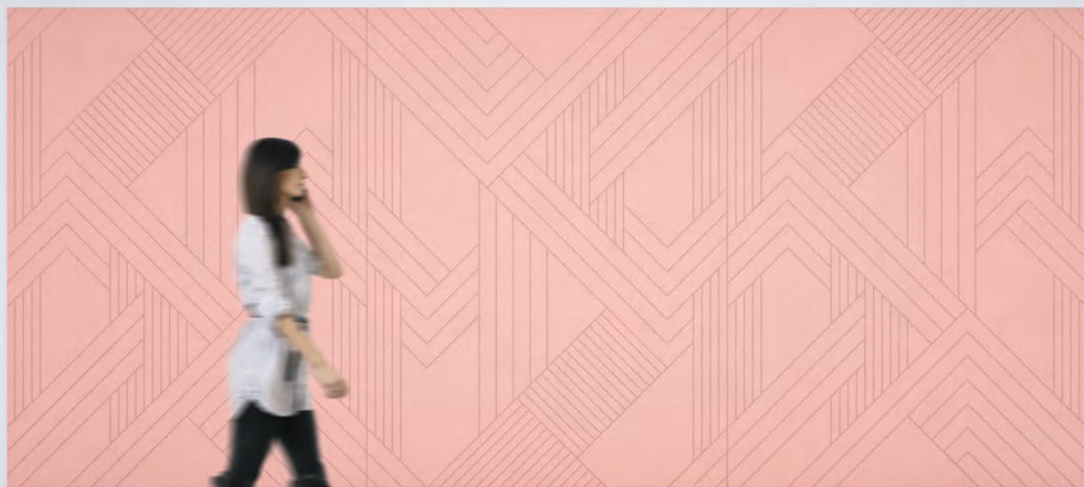




**FACET**  
WALL



**MAZE**  
WALL

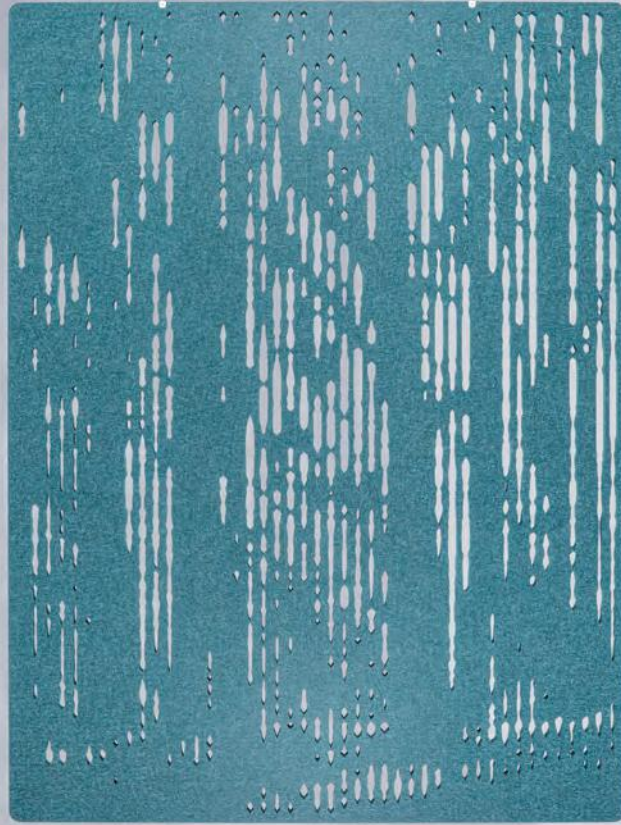


**GATSBY**  
WALL



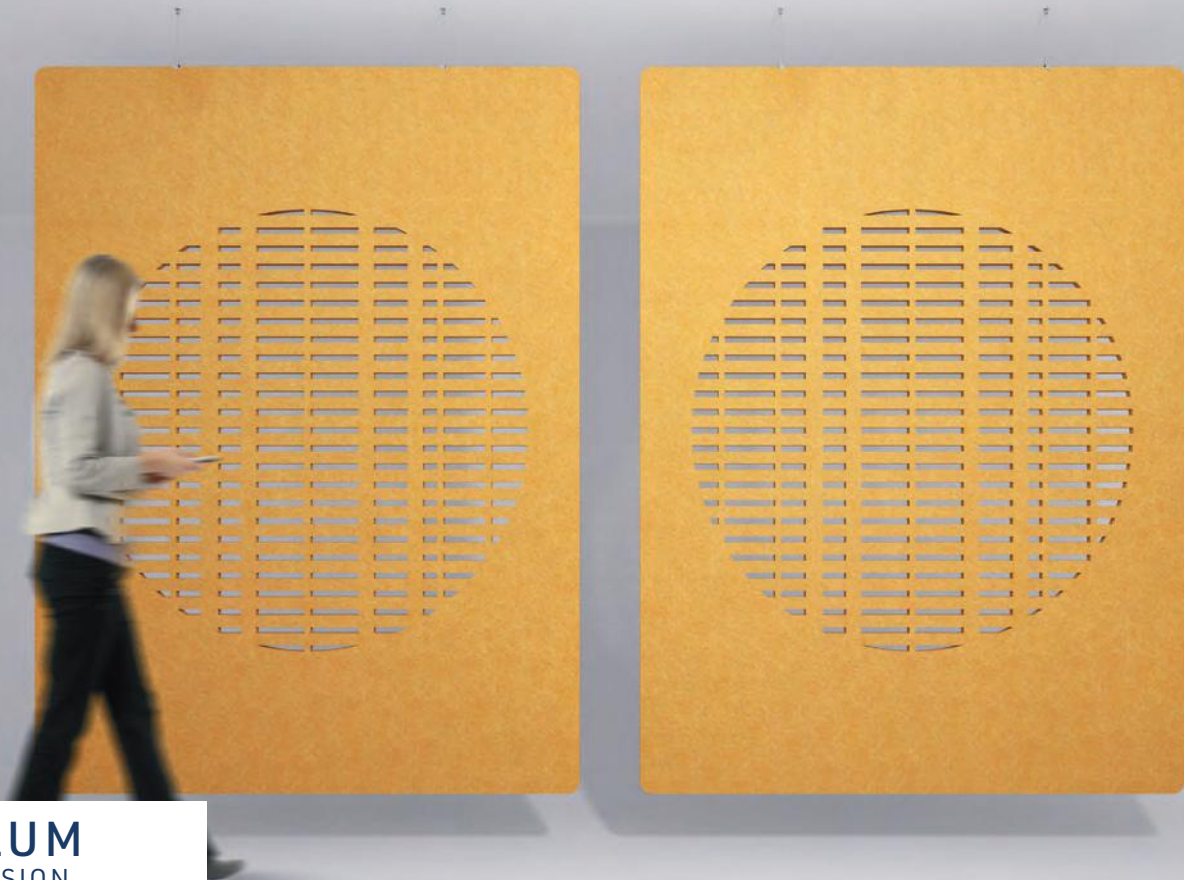
**BUBBLES**  
DIVISION



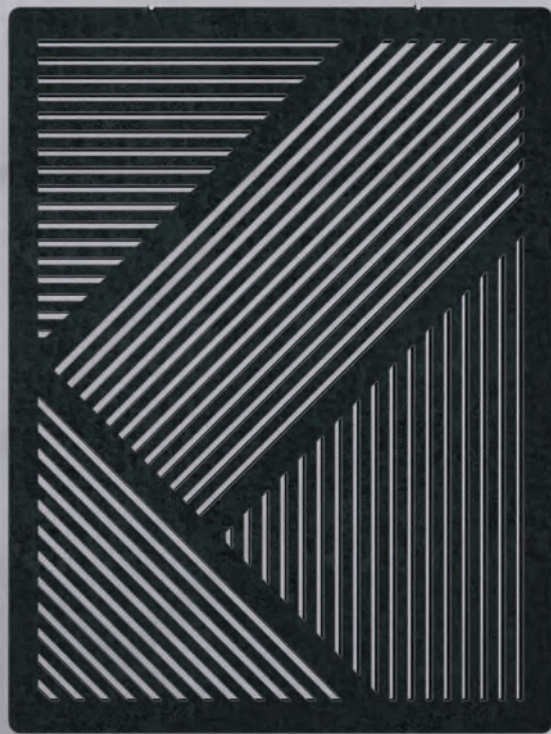
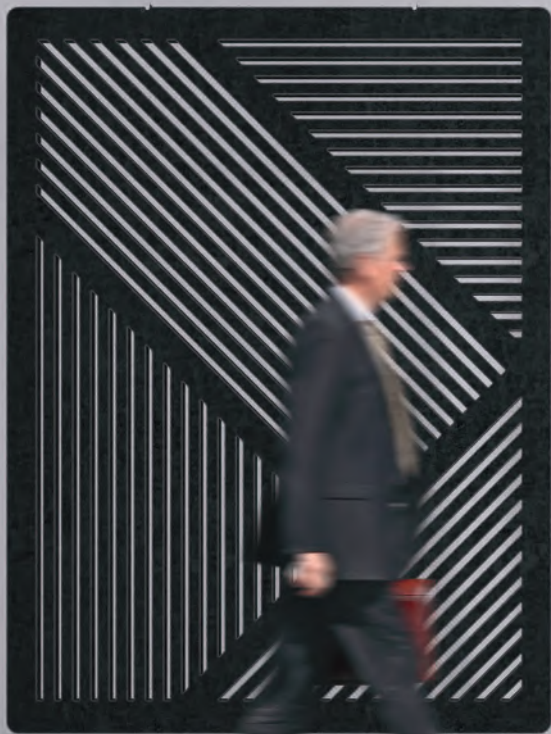


**FOREST**  
DIVISION

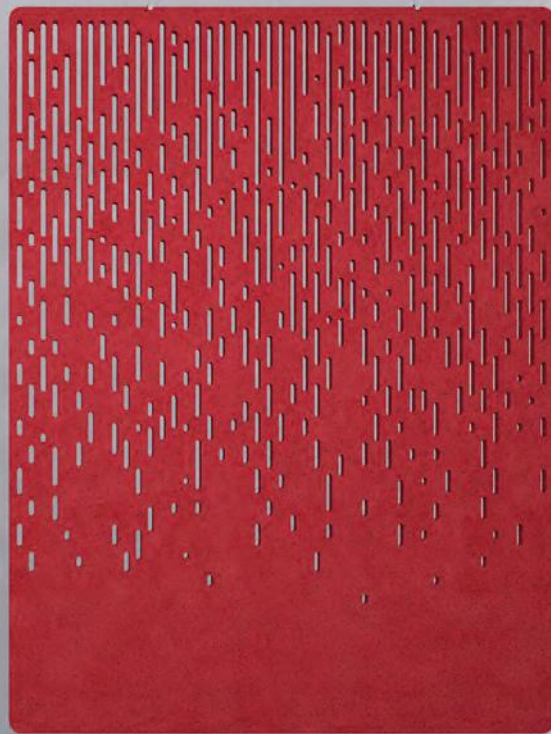




**ILLUM**  
DIVISION

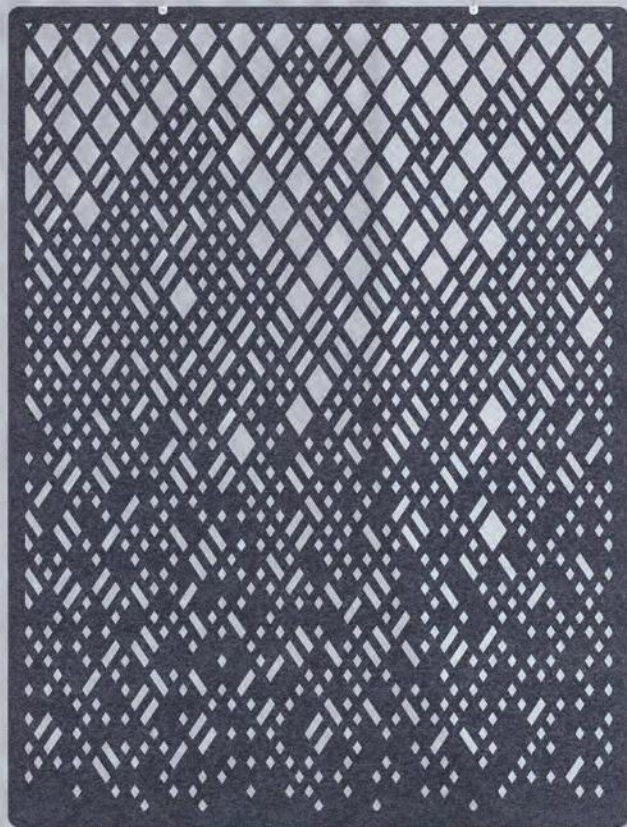


**LINEA**  
DIVISION

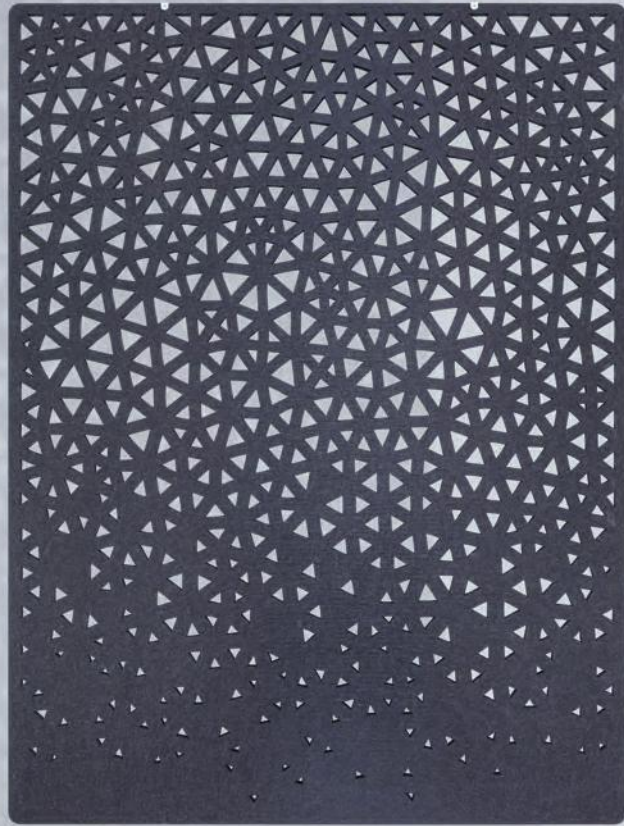


**MATRIX**  
DIVISION



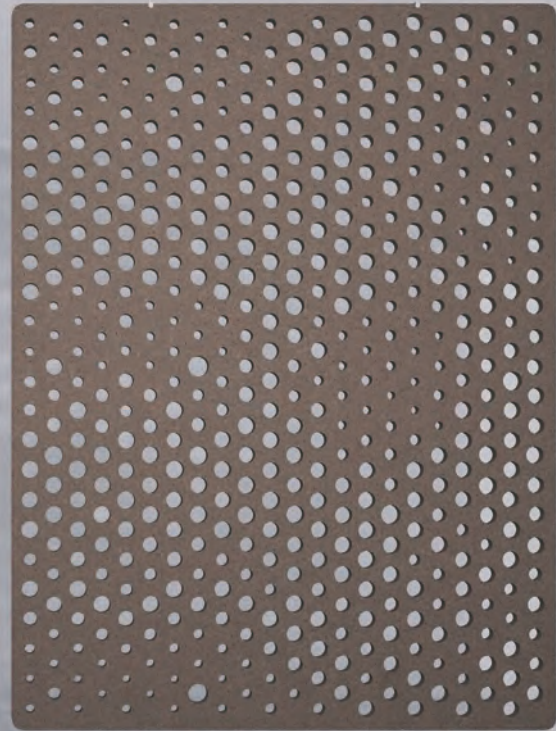


**TUNICA**  
DIVISION

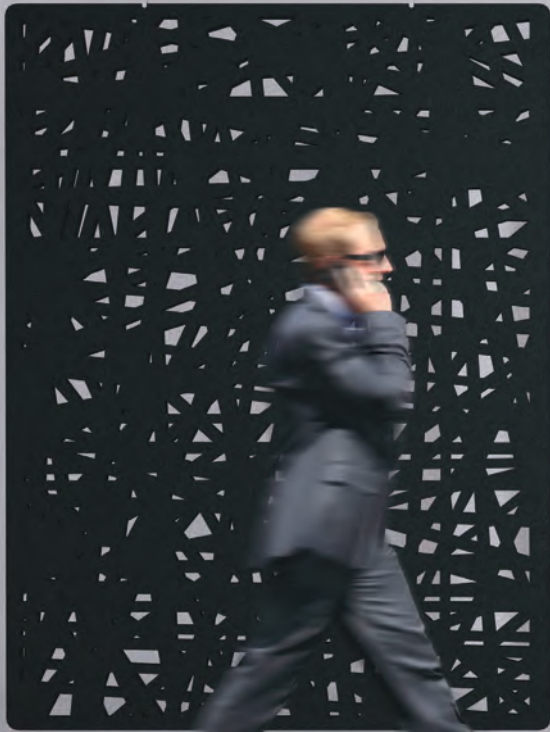


**WEB**  
DIVISION

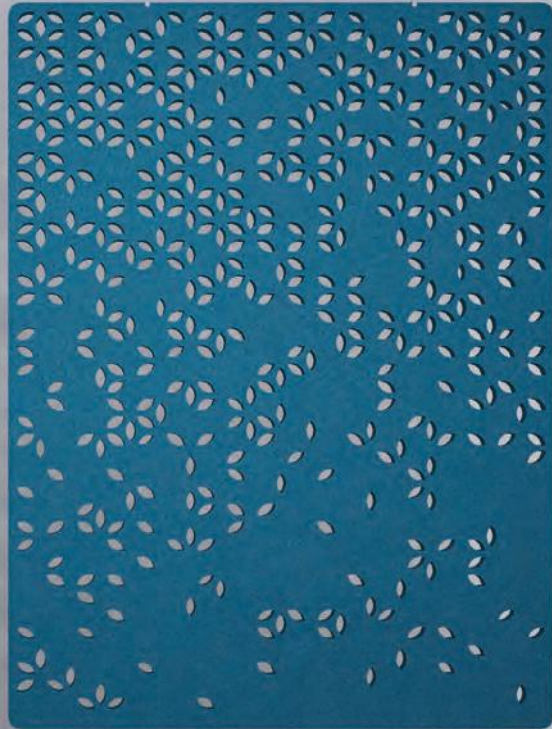




**GRADIENT**  
DIVISION

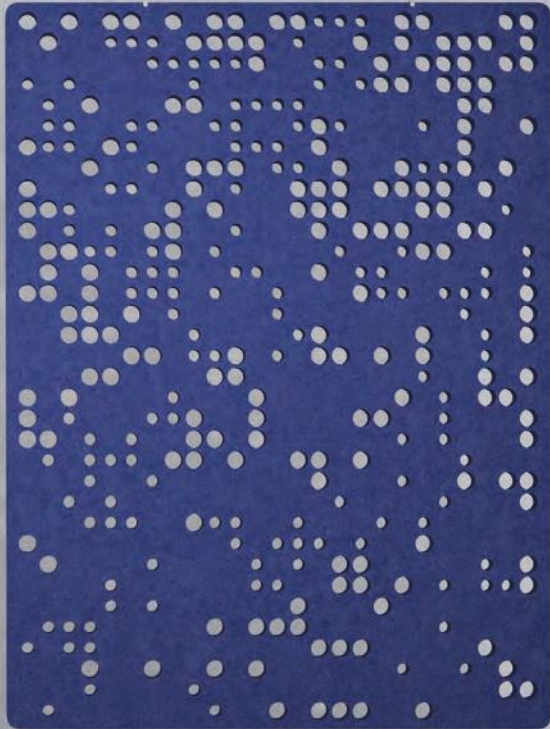
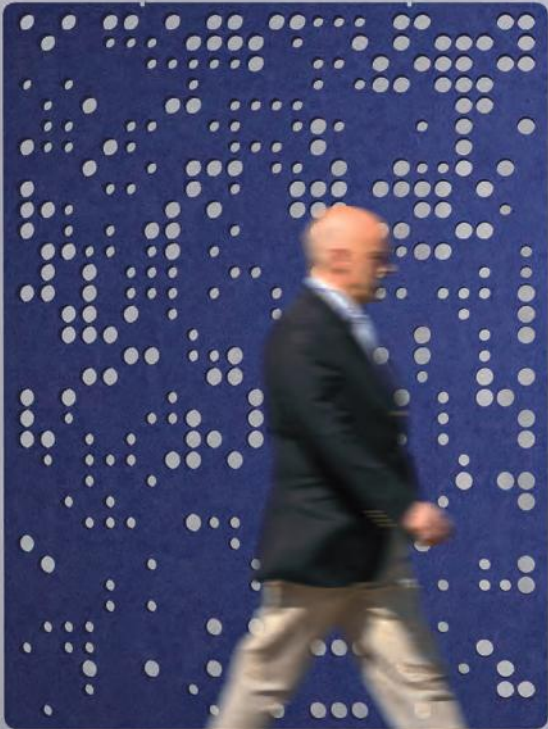


**RAYS**  
DIVISION



**CROSE**  
DIVISION





**BRAILLE**  
DIVISION



**ORNELLA**  
DIVISION





**PLAIN**  
DIVISION



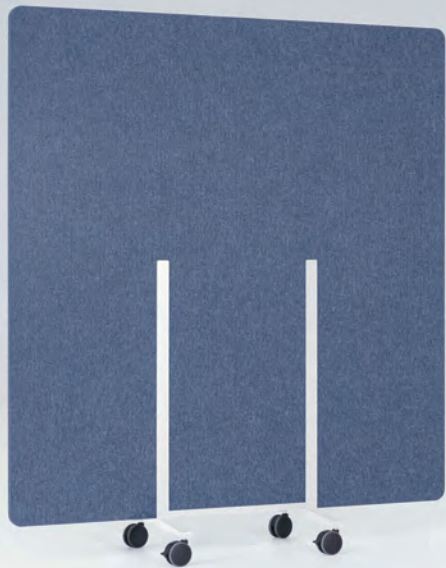
**MURUS**  
DIVISION



**PALING**  
DIVISION



**ASTO**  
DIVISION



**MOTUS**  
DIVISION





**SUPRA**  
DIVISION



**INFRA**  
DIVISION



**FULL WRAP**  
DIVISION



**TWOWAY**  
ORGANISATION BOX



**STORMBOARD**  
PIN & WRITE





**CHAT**  
CHATPOD®

## chatpod

**97% POST-CONSUMER CONTENT**

**100% RECYCLABLE**

### **100% CIRCULAR**

We up-cycle materials to build our pods and recycle them again later. Our entire facility is heated using production waste and our machines are powered by clean hydro energy.

### **100% SOCIAL**

ChatPod® is a great tool for companies that take corporate social responsibility seriously. We value and promote equality within our team. The pods are manufactured in the Swiss Alps together with handicapped professionals.

### **SAWDUST**

ChatPod®'s frames are made of sawdust. A powdery particle of wood, a by-product from saw mills. Compressed through high pressure and heat without resin, making it highly recyclable and environmentally friendly.

### **CARDBOARD**

ChatPod®'s body is made out of recycled cardboard. Cardboard is an extremely pressure resistant, rigid, dimensionally stable and most environmentally effective material to recycle, since the fibre in the cardboard has already been processed.

### **PET BOTTLES**

The acoustic exterior and interior cladding is made of up-cycled PET bottles. The open and highly compressed felt like structure is more effective than conventional acoustic composites.

### **RECYCLED RUBBER**

ChatPod®'s thin layer of sound proof lining is made of recycled rubber. This layer ensures the minimum sound transfer from within and outside the pod. An organic material with flame retardant composition.



**CHAT**  
CHATPOD®





**TORADEx AG**  
TECHNOLOGY



# PROJECTS

Power of acoustic through design. A seamless integration of acoustics treatments and design application.

IMPACT ACOUSTIC® have recently completed an office project in Luzern, Switzerland for a global technology company, completely driven by acoustic through design. The delicate balance of hard surfaces and acoustic cladded walls all over the office has proven effective and cost-efficient. The use of acoustic sails and acoustic integrated lighting gave the spaces an elegant flair while keeping the fun and comfort all throughout the office.







**CUBICLE**  
OF TOMORROW

# PROJECTS

**How Ikea's innovation lab redesigned its own open plan office. The new office design focuses on well-being, sustainability and community.**

Many employees hate open offices. Yet scores of them continue to be built around the world; after all, open plan designs likely save companies millions per year. Not content with its own open plan office, Ikea's innovation lab, Spacon & X decided to create all flexible divisions by using EchoPanel® 12mm. Movable partitions were using MOTUS and in meeting rooms, the UMBRA was used as an acoustic and decorative item. Overall, we were able to up-cycle around 19'000 PET bottles for the project.

The new space, which was designed by the local architecture studio Spacon & X, addresses many of the reasons people hate open plan offices, according to recent research on the topic. Chief among these? A lack of visual and acoustic privacy, which can make employees feel distracted and exposed, ultimately reducing productivity. It's a common refrain in office culture today. Some employees describe "hacking" their desks to force their co-workers to give them the personal space they want. In other cases, offices are installing phone booths to give employees some quiet space.





**RAIFEISSEN BANK**  
CUSTOMER EXPERIENCE

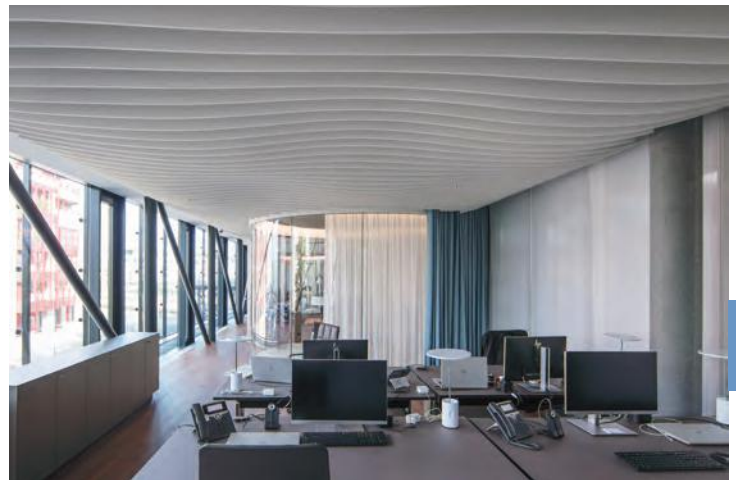


# PROJECTS

Great attention was paid to the design of the suspended ceiling. With its wave form, the ceiling refers to the nearby lake. It is the only part of the new bank branch that is clearly visible from the station concourse and acts as an eye-catcher. In combination with the furniture, it creates a pleasant atmosphere of a modern consulting bank.

All in all, this contribution impresses with a pronounced lightness and Reduction. The required zones and Rooms are transformed into an astounding Simplicity brought to the rental space, every centimetre being utilized seems. The rooms seem formal, like a wave.

Architects: Studio AGLO Arkitekten  
Photographer: Christoffer Joergensen





**BOSCH**  
LONG-LASTING SOLUTIONS



# PROJECTS

Bosch is now relying on the acoustic elements from IMPACT ACOUSTIC® for flexible use as acoustic ceiling elements, acoustic luminaries, acoustic wall cladding and decorative room dividers. In the last project in Athens we were able to recycle a total of more than 27'000 PET bottles.

Colours strategically used to define the spaces. Combination and variety of colours give the space a welcoming and dynamic feeling and combination of different IMPACT ACOUSTIC® products were used to achieve the required acoustic level in all the areas of the office.





**SPG INTERCITY**  
& Cushman & Wakefield

# PROJECTS

The independent real estate service companies Intercity Group and Alliance partner Cushman & Wakefield rely on IMPACT ACOUSTIC® in room acoustics.

On two floors, there is a co-working space where, in addition to the decorative acoustic ceiling elements, WAVE ceiling sails were used. The wall coverings in the privacy rooms were lined with EchoPanel® 24mm and the workstations used INFRA. Overall, we were able to up-cycle around 9,500 PET bottles for the project.







**ADUNO GROUP**  
OFFICE

# PROJECTS

Aduno is a great example of client-designer interaction. Impact Acoustic products are strategically located for maximum acoustic absorption results in different areas of the office without compromising design.

The active role that the client played during the consultation period combined with our external acoustic professional partner, made this project a great success.







**GetYourGuide**  
BESPOKE ACOUSTIC SOLUTION

# PROJECTS

GetYourGuide, the largest destination management travel platform, tackles acoustic challenges with various IMPACT ACOUSTIC® products: bespoke wall graphics and joinery items, canopy ceiling sails and ceiling baffles. The architects loved the flexible usage of the product.







**WUNDERRAUM**  
CO-WORKING

# PROJECTS

Wunderraum co-working space provide different work settings that requires different acoustic treatments. Acoustic wall claddings are widely used in shared and open spaces and acoustic dividers are installed in focus areas.

Working together with the project architect to achieve the bespoke acoustic solution with design in mind, made this project acoustically effective and aesthetically pleasing. Different work settings required different approaches to create a seamless design.



# DATA SHEET

## ARCHISONIC® 12 mm

|              |                                   |
|--------------|-----------------------------------|
| Dimensions:  | 1200mm x 2800mm                   |
| Composition: | 100% PET (min. 60% post-consumer) |
| Density:     | 2400g/m <sup>2</sup>              |
| Thickness:   | 12mm (+/-7%)                      |

Fire test:  
DIN EN 13501-1  
ASTME84

B-s1, d0  
Class A

VOC Emission:  
CDPH 01350  
ISO 16000

Pass  
(CDHPH/EHLB/Standard  
Method V1.2.)

EN 16516

Environmental:

Cradle to Cradle Certified  
Product qualifies for  
LEED v4 specifications  
on VOC emissions in  
LEED EQ credit  
(Low-emitting products)

Colour Fastness:  
EN ISO 105-B02, A1

Grade 6

Material reutilisation:

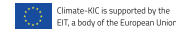
53 PET Bottles/m<sup>2</sup>

Sound absorption  
DIN EN ISO 11654

aw 0.30 (no air gap)

Sound Absorption Class: A

Supported by:



Climate-KIC is supported by the  
EIT, a body of the European Union

### COLOUR & SURFACE DEVIATION

ARCHISONIC® is manufactured at the highest quality standards, yet slight color and surface deviations caused by the high degree of re-cycled fiber are an inevitable part of the product characteristics and do not claim warranty services - it is the natural and less manicured look that designers appreciate about this product around the world. Irregularities are best visible in our light color products.





# DATA SHEET

## ARCHISONIC® 24 mm

|  |  |
|--|--|
| Dimensions:  | 1800mm x 2400mm                            |
| Composition:   | 100% PET (min. 60% post-consumer)          |
| Density:   | 4000g/m <sup>2</sup>                       |
| Thickness:   | 24mm (+/-7%)                               |
| Fire test:<br>DIN EN 13501-1<br>ASTME84                  | B-s1, d0<br>Class A                        |
| VOC Emission:<br>CDPH 01350<br>ISO 16000<br><br>EN 16516 | Pass<br>(CDHPH/EHLB/Standard Method V1.2.) |

### Environmental:

Cradle to Cradle Certified Product qualifies for LEED v4 specifications on VOC emissions in LEED EQ credit (Low-emitting products)



Colour Fastness:  
EN ISO 105-B02, A1

Grade 6

Material reutilisation:

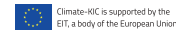
88 PET Bottles/m<sup>2</sup>

Sound absorption  
DIN EN ISO 11654

aw 0.55 (no air gap)  
aw 0.65 (50mm)  
aw 0.90 (100mm)  
aw 0.95 (200mm)  
aw 0.95 (300mm)

Sound Absorption Class: A

Supported by:



### COLOUR & SURFACE DEVIATION

ARCHISONIC® is manufactured at the highest quality standards, yet slight color and surface deviations caused by the high degree of re-cycled fiber are an inevitable part of the product characteristics and do not claim warranty services - it is the natural and less manicured look that designers appreciate about this product around the world. Irregularities are best visible in our light color products.

# "THE IMPERFECT SQUARE"

